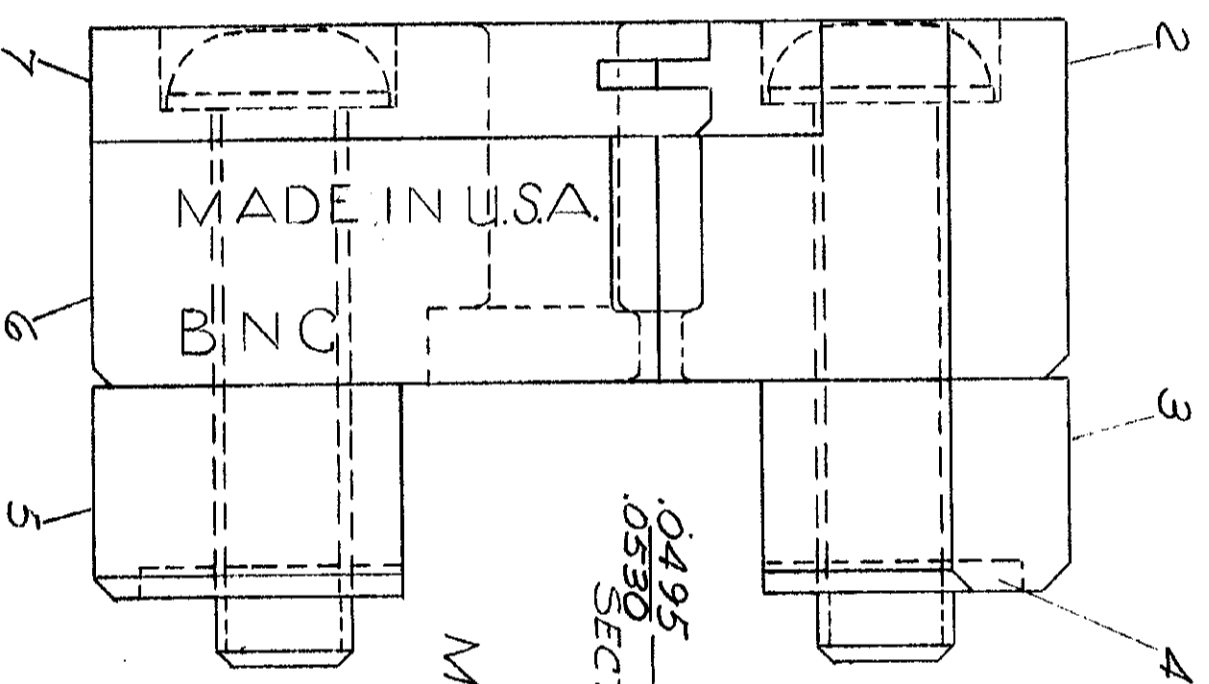
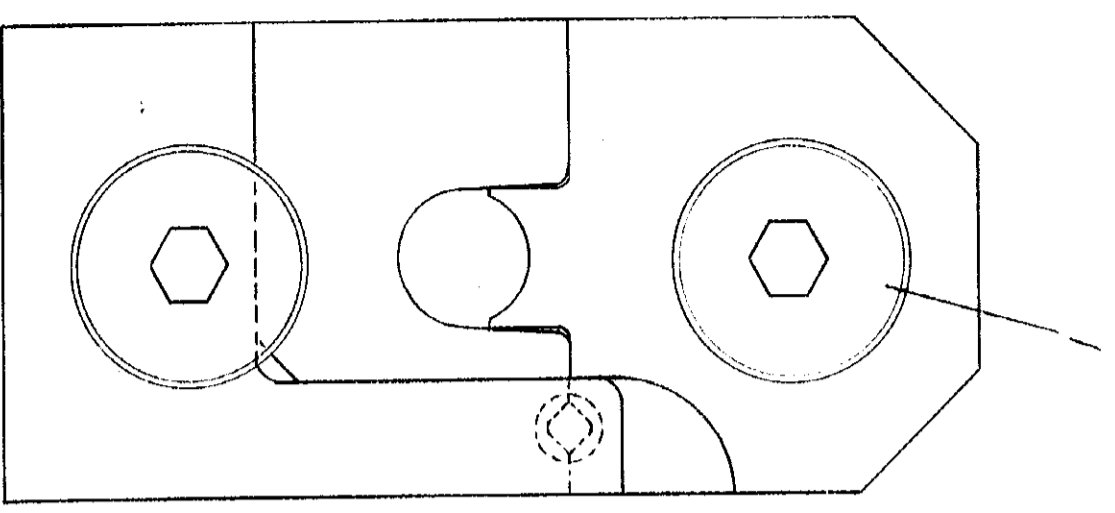
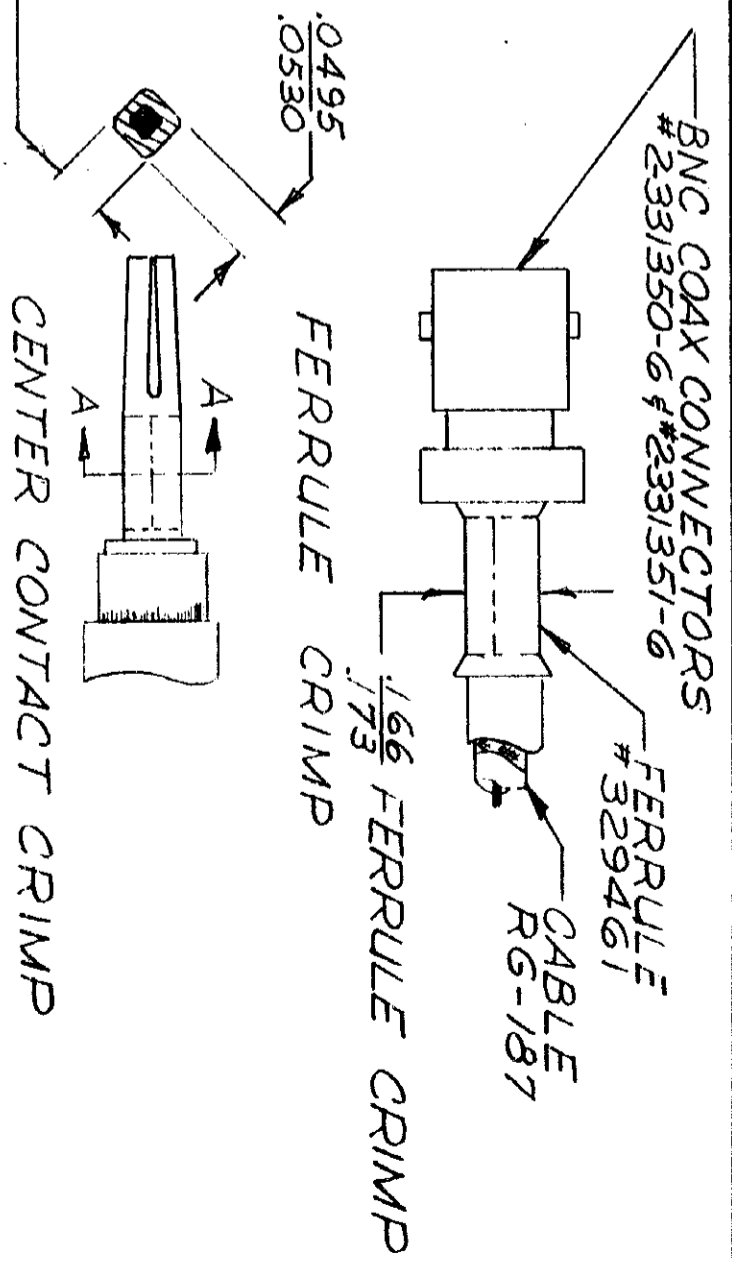


DIMENSIONS IN INCHES. DO NOT SCALE PRINT



METHOD OF GAGING CRIMP DIMENSIONS  
 THE CRIMP DIMS APPLY ONLY TO THE ABOVE  
 COMBINATIONS ON A CRIMPED PRODUCT.



**SUPERSEDED BY 152396**

2-16-73

1	6-304052-2	LOCATOR	7
1	306617-3	INDENTER	6
1	8-305832-8	SPACER - LOWER	5
2	1-21046-3	RING - RETAINING	4
1	8-305832-7	SPACER - UPPER	3
1	306618-3	ANVIL	2
2	306592-1	SCREW SPECIAL	1

REQUIRED PER ASSEMBLY		DR B. Stuppell 9-30-65		WIRE - RANGE - INSULATION		ECONOMY BNC COAXIAL	
DESCRIPTION		DR H. J. [Signature] 10-13-65		TOLERANCE EXCEPT AS NOTED ± .015 ± .1"		SCALE 4-1	
NUMBER		69669-2		NAME		DIE ASSEMBLY	
REVISION RECORD		PL DR		CHK DATE		CLASS	
8 SUPERSEDED		7		2-16-73		AWP AMP INCORPORATED HARRISBURG, PENNA.	
A REVISED		PL DR		2-16-73		CUSTOMER COPY REFERENCE ONLY	
LTR		DR		CHK DATE		MATERIAL AND FINISH	

**AWP** AMP INCORPORATED HARRISBURG, PENNA.

ECONOMY BNC COAXIAL

69669-2

CLASS

SCALE 4-1

WIRE - RANGE - INSULATION

TOLERANCE EXCEPT AS NOTED ± .015 ± .1"

NAME

DIE ASSEMBLY

CLASS

AWP AMP INCORPORATED HARRISBURG, PENNA.

CUSTOMER COPY REFERENCE ONLY

MATERIAL AND FINISH

DR B. Stuppell 9-30-65

DR H. J. [Signature] 10-13-65

DESCRIPTION

NUMBER

REVISION RECORD

LTR

8 SUPERSEDED

A REVISED

PL DR

CHK DATE

2-16-73

2-16-73

DR

CHK DATE

2-16-73