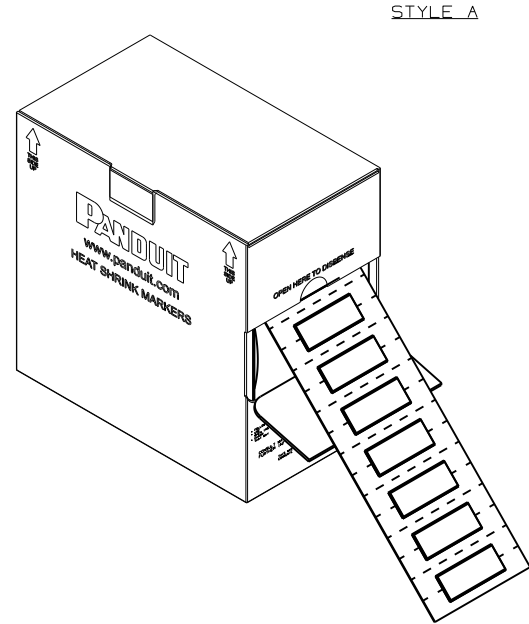
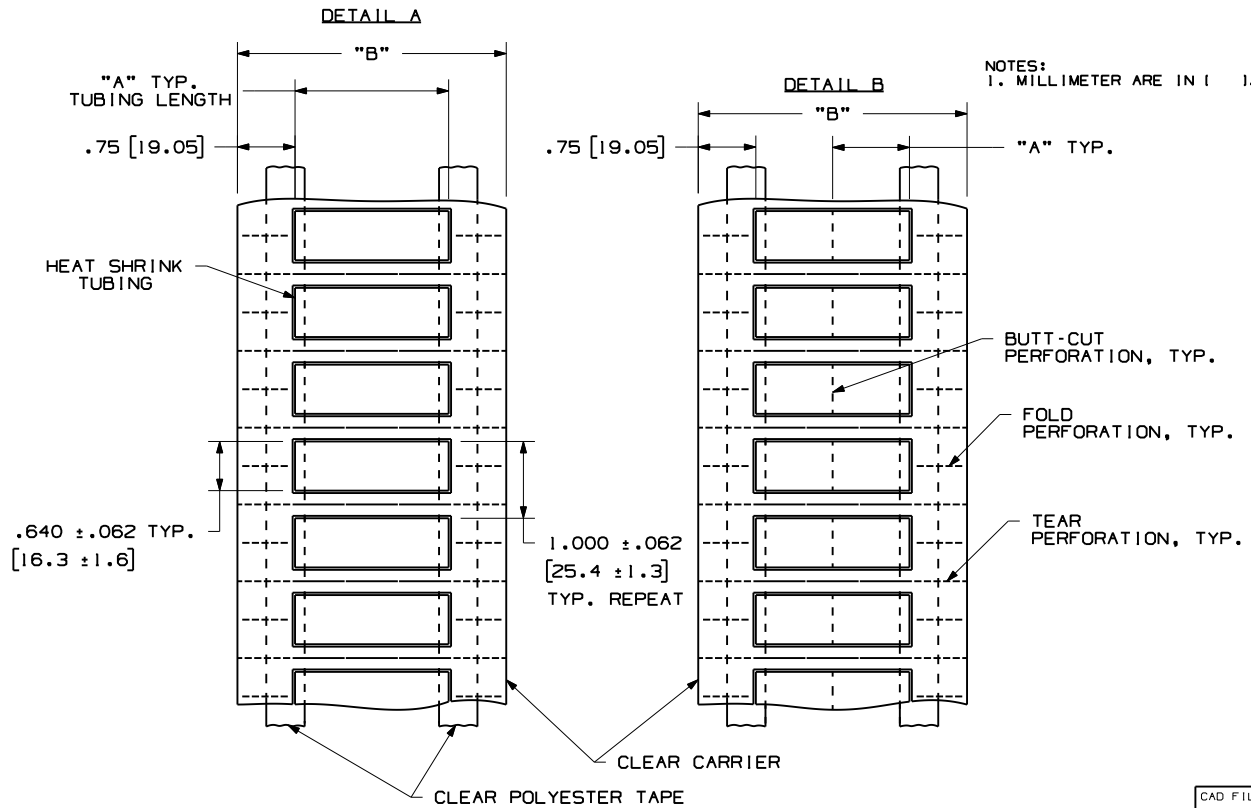


THIS COPY IS PROVIDED ON A RESTRICTED BASIS AND IS NOT TO BE USED IN ANY WAY DETRIMENTAL TO THE INTERESTS OF PANDUIT CORP.

| PART NUMBER | SEE DETAIL | MATERIAL | "A" +/- .062 | "B" +/- .062 | INSIDE NOMINAL DIA. | MIN ID SUPPLIED | MAX. RECOVERED | MARKER ACROSS | TUBING COLOR | PKG. QTY. | SEE STYLE |
|---------------|------------|----------|----------------|----------------|---------------------|-----------------|----------------|---------------|--------------|-----------|-----------|
| H100X064HST-2 | B | GMUFR31 | 1.00 [25.4] | 3.50 [88.9] | 3/8 in. [9.5 mm] | 0.38 [9.6] | 0.12 [3.0] | 2 | YELLOW | 1000 | A |
| H200X064HST-2 | A | | 2.00 [50.8] | | | | | 1 | | 500 | |



CAD FILENAME/LAYERS 100815BG-DC-C10960/00A

PANDUIT CORP. TINLEY PARK, ILLINOIS

CUSTOMER DRAWING H***X064H*T-2
TWO-SIDED HEAT SHRINK LABEL
FLUID RESISTANT

UNLESS OTHERWISE SPECIFIED,
DIMENSIONAL TOLERANCES ARE:
(.X) ± .12 (.XXX) ± .020
(.XX) ± .062 ANGLES ±

UNLESS OTHERWISE SPECIFIED,
ALL DIMENSIONS ARE GIVEN
IN INCHES, THIRD ANGLE PROJECTION.

DRAWN BY
RVU

MAT'L:

SCALE
NTS

DATE
11/14/11

HEAT SHRINK TUBING,
GMUHF21

DRAWING NO.

C10960

DWG
A
SIZE

| REV | DATE | BY | CHK | DESCRIPTION | ECN | R | CUST | SUP |
|-----|----------|-----|-----|------------------|------|---|------|-----|
| 0 | 12/13/11 | RVU | | DRAWING RELEASE. | 6566 | R | | |