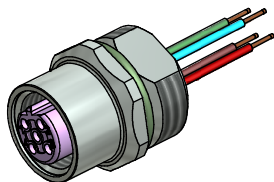


Contact assignment:

- 1) brown
- 2) Profibus-A green
- 3) blue
- 4) Profibus-B red



Technical specification:

Rated voltage: 250 V
IEC 61076-2-101

Current rating: 4 A at 40°C
IEC 61076-2-101

Insulation resistance: >=100 MΩ
IEC 60512

Pollution degree: 3/2
IEC 60664-1

Degree of protection: IP 67, in mated condition
IEC 60529

Temperature range: -30°C ... +80°C

Mating cycles: >=100
IEC 60512-9a

Materials:

Contact: CuZn

Contact plating: Nickel, gold plated

Contact carrier: PBT GF, UL 94

Sealing: FPM

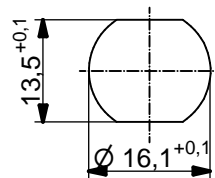
Socket housing: CuZn, nickel plated

Grouting: Polyurethane-resin, UL 94

Installation specification:

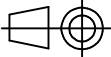

recommended torque: 1-1,2 Nm

Conec installation tool: Torque wrench: 36-000200
Insert across flats 17: 36-000230



Minimum wall thickness 1,5mm,
alternativ panel cut-out d=16,1

| Part no: | Description: | Pos | Length L: | Wire: |
|----------|-------------------------|-----|-----------|----------------|
| 43-01042 | SAL - 12B - FK4.3 - 0,5 | 4 | 0,5m | AWG 22 PVC, UL |
| 43-xxxxx | SAL - 12B - FK4.3 - ... | 4 | x | |

| | | | | |
|---|--|--|---------|--|
| DO NOT ALTER CAD DRAWING BY HAND Directive 2002/95/EC RoHS compliant | Index: c 01.02.13 MG Ä4631 Data sheet revised, technical specification changed, materials corrected |  dim. in mm | | title: Female socket M12x1 with wire, frontmounting, Profibus DP |
| | | date | name | |
| | tolerance of wire: L <= 0,5m: L + 20mm L > 0,5m: L + 4% | drawn 20.02.07 | Fromm | |
| | general tolerance: 0 ± 0,50mm 0,0 ± 0,25mm 0,00 ± 0,10mm | appd. 06.03.07 | Mankopf | |
|  | | 43K1A294 | | part no: see table |
| | | THIS DRAWING MAY NOT BE COPIED OR REPRODUCED IN ANY WAY, AND MAY NOT BE PASSED ON TO A THIRD PARTY WITHOUT WRITTEN PERMISSION. OWNERSHIP AND COPYRIGHT OF CONEC GmbH | | |